

Group production - (in tonnes)
April 2019

	2019					2018					YoY Variation	
	Q1	April	Q3	Q4	YTD	Q1	April	Q3	Q4	YTD	April	YTD
Fresh fruit bunches produced												
Own												
Tolan Tiga Group	68 659	21 892			90 551	73 557	24 301			97 858	-9,91%	-7,47%
Umbul Mas Wisesa Group	48 282	14 788			63 070	46 742	17 382			64 124	-14,92%	-1,64%
Agro Muko Group	74 717	24 731			99 448	84 280	31 150			115 430	-20,61%	-13,85%
South Sumatra Group	13 160	4 071			17 231	6 548	4 411			10 959	-7,71%	57,23%
Hargy Oil Palms	76 041	27 432			103 473	84 071	29 474			113 545	-6,93%	-8,87%
Total own	280 858	92 915	0	0	373 773	295 198	106 718	0	0	401 916	-12,93%	-7,00%
Outgrowers												
Tolan Tiga Group	0	0			0	0	0			0	-	-
Umbul Mas Wisesa Group	132	51			183	0	0			0	-	-
Agro Muko Group	3 328	1 142			4 470	3 441	1 314			4 755	-13,05%	-5,99%
South Sumatra Group	931	334			1 265	517	220			737	51,75%	71,64%
Hargy Oil Palms	48 242	17 450			65 692	46 628	19 115			65 743	-8,71%	-0,08%
Total outgrowers	52 632	18 978	0	0	71 610	50 586	20 649	0	0	71 235	-8,09%	0,53%
Total FFB produced	333 490	111 893	0	0	445 383	345 784	127 367	0	0	473 151	-12,15%	-5,87%
Fresh fruit bunches sold												
Tolan Tiga Group	0	0			0	0	0			0	-	-
Umbul Mas Wisesa Group	9 024	3 064			12 088	7 674	2 688			10 362	13,97%	16,66%
South Sumatra Group	0	0			0	1 191	1 947			3 138	-100,00%	-100,00%
Total FFB sold	9 024	3 064	0	0	12 088	8 865	4 635	0	0	13 500	-33,90%	-10,46%
Fresh fruit bunches processed												
Tolan Tiga Group	68 659	21 892			90 551	73 557	24 301			97 858	-9,91%	-7,47%
Umbul Mas Wisesa Group	39 389	11 776			51 165	39 068	14 694			53 762	-19,86%	-4,83%
Agro Muko Group	78 044	25 874			103 918	87 721	32 464			120 185	-20,30%	-13,53%
South Sumatra Group	14 091	4 405			18 496	5 874	2 684			8 558	64,11%	116,13%
Hargy Oil Palms	124 283	44 882			169 165	130 699	48 589			179 288	-7,63%	-5,65%
Total FFB processed	324 465	108 830	0	0	433 295	336 919	122 732	0	0	459 651	-11,33%	-5,73%
PO extraction rate												
Tolan Tiga Group	22,4%	22,5%			22,5%	22,7%	22,9%			22,7%	-1,88%	-1,23%
Umbul Mas Wisesa Group	24,2%	23,2%			24,0%	24,5%	24,9%			24,5%	-6,66%	-2,06%
Agro Muko Group	23,5%	23,3%			23,5%	23,2%	22,9%			23,1%	1,72%	1,70%
Hargy Oil Palms	22,2%	24,1%			22,7%	23,5%	24,1%			23,7%	0,21%	-4,11%
South Sumatra Group	19,8%	19,9%			19,8%	15,1%	16,0%			15,4%	24,30%	29,06%
Total PO extraction rate	22,7%	23,3%			22,9%	23,2%	23,5%			23,3%	-0,69%	-1,75%
Palm Oil												
Own												
Tolan Tiga Group	15 413	4 919			20 332	16 689	5 558			22 247	-11,50%	-8,61%
Umbul Mas Wisesa Group	9 519	2 726			12 245	9 572	3 665			13 237	-25,62%	-7,49%
Agro Muko Group	17 642	5 779			23 421	19 576	7 140			26 716	-19,06%	-12,33%
South Sumatra Group	2 687	835			3 522	821	430			1 251	94,19%	181,53%
Hargy Oil Palms	16 949	6 632			23 581	19 851	7 158			27 009	-7,35%	-12,69%
Total own	62 210	20 891	0	0	83 101	66 509	23 951	0	0	90 460	-12,78%	-8,14%
Outgrowers												
Tolan Tiga Group	0	0			0	0	0			0	-	-
Umbul Mas Wisesa Group	32	11			43	0	0			0	-	-
Agro Muko Group	730	248			978	750	281			1 031	-11,74%	-5,14%
South Sumatra Group	105	41			146	64	0			64	-	128,13%
Hargy Oil Palms	10 615	4 207			14 822	10 862	4 575			15 437	-8,04%	-3,98%
Total outgrowers	11 482	4 507	0	0	15 989	11 676	4 856	0	0	16 532	-7,19%	-3,28%
Total Palm Oil	73 692	25 398	0	0	99 090	78 185	28 807	0	0	106 992	-11,83%	-7,39%

Palm Kernels											April		YTD		
	Q1	April	Q3	Q4	YTD	Q1	April	Q3	Q4	YTD					
Own															
Tolan Tiga Group	3 855	1 141			4 996	4 118	1 366			5 484			-16,47%	-8,90%	
Umbul Mas Wisesa Group	1 444	394			1 838	1 576	572			2 148			-31,12%	-14,43%	
Agro Muko Group	3 561	1 152			4 713	4 310	1 514			5 824			-23,91%	-19,08%	
South Sumatra Group	543	167			710	213	103			316			62,14%	124,68%	
Total own	9 403	2 854	0	0	12 257	10 217	3 555	0	0	13 772			-19,72%	-11,00%	
Outgrowers															
Tolan Tiga Group	0	0			0	0	0			0			-	-	
Umbul Mas Wisesa Group	4	2			6	0	0			0			-	-	
Agro Muko Group	145	49			194	152	56			208			-12,50%	-6,73%	
South Sumatra Group	21	8			29	16	0			16			-	81,25%	
Total outgrowers	170	59	0	0	229	168	56	0	0	224			5,36%	2,23%	
Total Palm Kernels	9 573	2 913	0	0	12 486	10 385	3 611	0	0	13 996			-19,33%	-10,79%	
Palm Kernel Oil											April		YTD		
	Q1	April	Q3	Q4	YTD	Q1	April	Q3	Q4	YTD					
Hargy Oil Palms Own	1 526	537			2 063	1 616	647			2 263			-17,00%	-8,84%	
Hargy Oil Palms Outgrowers	986	351			1 337	926	412			1 338			-14,81%	-0,07%	
Total Palm Kernel Oil	2 512	888	0	0	3 400	2 542	1 059	0	0	3 600			-16,15%	-5,56%	
Rubber											April		YTD		
	Q1	April	Q3	Q4	YTD	Q1	April	Q3	Q4	YTD					
Own															
Tolan Tiga Group	486	61			547	643	98			741			-37,76%	-26,18%	
Melania	963	281			1 244	965	371			1 336			-24,26%	-6,89%	
Agro Muko	600	160			760	686	235			921			-31,91%	-17,48%	
Total Rubber	2 049	502	0	0	2 551	2 294	704	0	0	2 998			-28,69%	-14,91%	
Tea											April		YTD		
	Q1	April	Q3	Q4	YTD	Q1	April	Q3	Q4	YTD					
Melania	738	187			925	595	226			821			-17,26%	12,67%	
Total Tea	738	187	0	0	925	595	226	0	0	821			-17,26%	12,67%	
Bananas											April		YTD		
	Q1	April	Q3	Q4	YTD	Q1	April	Q3	Q4	YTD					
Azaguie 1	1 440	424			1 864	1 345	336			1 681			26,19%	10,89%	
Azaguie 2	2 497	1 002			3 499	2 395	884			3 279			13,35%	6,71%	
Agboville	2 349	637			2 986	2 038	856			2 894			-25,58%	3,18%	
Motobe	2 466	947			3 413	1 538	666			2 204			42,19%	54,85%	
Total Bananas	8 752	3 010	0	0	11 762	7 316	2 742	0	0	10 058			9,77%	16,94%	

Commodity Price Data

April 2019

Average market prices

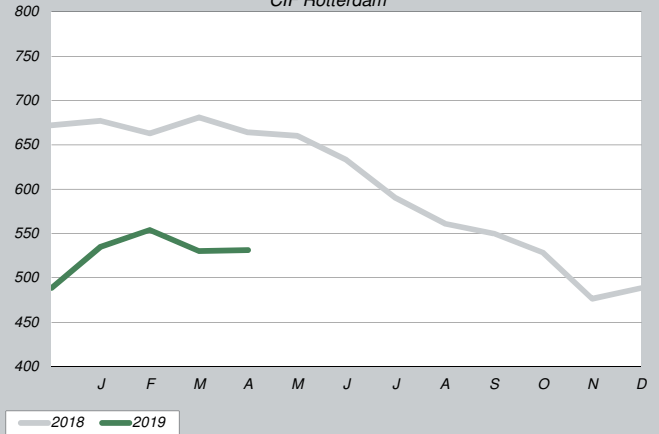
Product	YTD April/2019	YTD April/2018	YTD Q4/2018
CPO (CIF Rotterdam)* in \$/mt	538	671	598
CPKO (CIF Rotterdam)* in \$/mt	694	1 110	921
RSS3 (FOB Singapore)** in \$/mt	1 671	1 733	1 565
Tea (avg auct Mombasa)** in \$/mt	2 187	2 859	2 579
Bananas (CFR Europe)*** in \$/mt	686	737	647

* Oil World price data

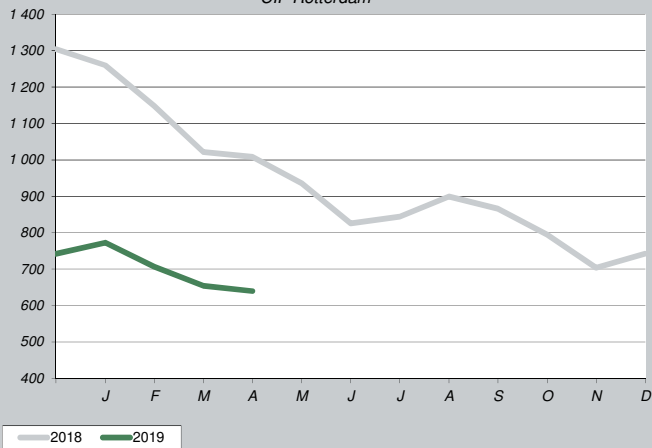
** World bank commodity price data - updated database

*** CIRAD price data (in EUR)

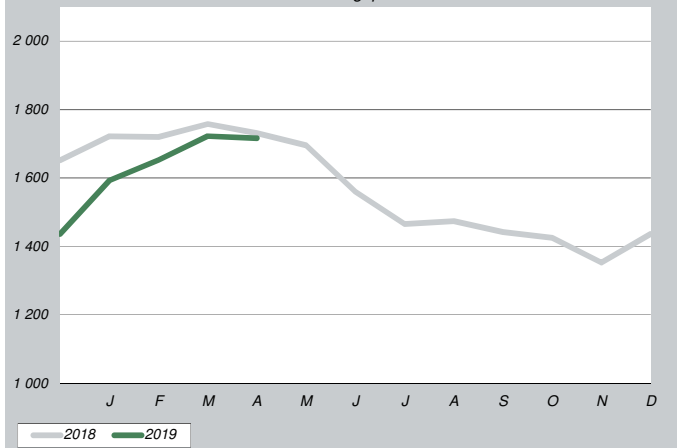
Crude Palm Oil in \$/mt
CIF Rotterdam



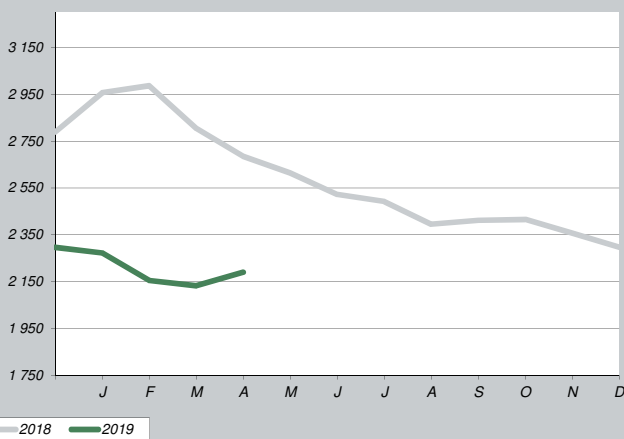
Crude Palm Kernel Oil in \$/mt
CIF Rotterdam



RSS3 in \$/mt
FOB Singapore



Tea in \$/mt
average auction Mombasa



Bananas EU in \$/mt

