

Group production - (in tonnes) December 2020

	2020					2019					YoY Variation	
	Q1	Q2	Q3	Q4	YTD	Q1	Q2	Q3	Q4	YTD	Q4	YTD
Fresh fruit bunches produced												
Own												
Tolan Tiga Group	68 301	71 723	89 484	69 249	298 757	68 659	70 923	94 739	77 895	312 216	-11,10%	-4,31%
Umbul Mas Wisesa Group	44 038	52 346	65 546	45 054	206 984	48 282	48 018	58 994	44 241	199 535	1,84%	3,73%
Agro Muko Group	85 147	96 387	91 513	89 498	362 545	74 717	76 870	102 566	85 077	339 230	5,20%	6,87%
South Sumatra Group	16 580	14 823	19 173	31 990	82 567	13 160	14 535	19 857	21 386	68 938	49,58%	19,77%
Hargy Oil Palms	66 584	65 825	59 463	77 744	269 616	76 041	82 388	40 078	57 008	255 515	36,37%	5,52%
Total own	280 650	301 105	325 179	313 535	1 220 469	280 858	292 735	316 234	285 607	1 175 434	9,78%	3,83%
Outgrowers												
Tolan Tiga Group	210	465	797	936	2 408	0	48	337	252	637	271,43%	278,02%
Umbul Mas Wisesa Group	155	389	601	780	1 925	132	132	234	152	650	413,16%	196,15%
Agro Muko Group	3 968	4 248	4 019	4 151	16 386	3 328	4 918	5 347	4 426	18 019	-6,21%	-9,06%
South Sumatra Group	1 583	1 525	2 512	2 313	7 933	931	1 062	1 265	1 798	5 056	28,64%	56,89%
Hargy Oil Palms	59 419	58 039	45 516	46 817	209 791	48 242	54 737	37 325	44 571	184 875	5,04%	13,48%
Total outgrowers	65 335	64 666	53 445	54 997	238 443	52 632	60 898	44 508	51 199	209 237	7,42%	13,96%
Total FFB produced	345 985	365 770	378 625	368 532	1 458 912	333 490	353 633	360 742	336 806	1 384 671	9,42%	5,36%
Fresh fruit bunches sold												
Tolan Tiga Group	0	0	2	0	2	0	0	2	0	2	-	0,00%
Umbul Mas Wisesa Group	10 020	10 602	12 076	9 397	42 095	9 024	10 067	11 722	8 339	39 152	12,69%	7,52%
Agro Muko Group	485	469	158	763	1 875	694	676	631	359	2 360	112,65%	-20,52%
South Sumatra Group	0	872	0	8 124	8 996	0	0	0	0	0	-	-
Total FFB sold	10 505	11 943	12 236	18 284	52 969	9 718	10 743	12 355	8 698	41 514	110,21%	27,59%
Fresh fruit bunches processed												
Tolan Tiga Group	68 511	72 188	90 279	70 186	301 164	68 659	70 971	95 074	78 147	312 851	-10,19%	-3,74%
Umbul Mas Wisesa Group	34 172	42 134	54 071	36 437	166 814	39 389	38 083	47 506	36 054	161 032	1,06%	3,59%
Agro Muko Group	88 630	100 166	95 374	92 886	377 056	77 350	81 113	107 281	89 503	355 247	3,78%	6,14%
South Sumatra Group	18 163	15 476	21 685	26 179	81 504	14 091	15 598	21 123	23 184	73 996	12,92%	10,15%
Hargy Oil Palms	126 003	123 864	104 979	124 561	479 407	124 283	137 126	77 403	101 579	440 390	22,62%	8,86%
Total FFB processed	335 480	353 827	366 389	350 249	1 405 944	323 771	342 891	348 387	328 467	1 343 516	6,63%	4,65%
PO extraction rate												
Tolan Tiga Group	22,6%	22,6%	22,4%	22,5%	22,5%	22,4%	22,6%	22,6%	22,6%	22,6%	-0,59%	-0,21%
Umbul Mas Wisesa Group	23,5%	22,9%	23,0%	23,1%	23,1%	24,2%	23,1%	24,4%	22,9%	23,7%	0,65%	-2,70%
Agro Muko Group	23,8%	23,5%	22,8%	22,5%	23,1%	23,8%	23,2%	24,5%	24,6%	24,1%	-8,62%	-3,95%
South Sumatra Group	22,5%	21,8%	20,1%	21,8%	21,5%	19,8%	20,2%	20,0%	21,9%	20,6%	-0,36%	4,43%
Hargy Oil Palms	23,7%	25,0%	24,6%	25,2%	24,6%	22,2%	24,2%	22,2%	24,5%	23,4%	2,81%	5,52%
Total PO extraction rate	23,4%	23,7%	23,1%	23,5%	23,4%	22,8%	23,3%	23,2%	23,7%	23,3%	-1,11%	0,69%
Palm Oil												
Own												
Tolan Tiga Group	15 467	16 187	20 086	15 570	67 310	15 413	16 025	21 433	17 618	70 489	-11,62%	-4,51%
Umbul Mas Wisesa Group	7 985	9 608	12 428	8 392	38 413	9 519	8 781	11 552	8 237	38 089	1,88%	0,85%
Agro Muko Group	20 148	22 482	20 910	20 005	83 545	17 642	18 081	25 219	21 065	82 007	-5,03%	1,88%
South Sumatra Group	3 734	3 030	3 888	5 120	15 772	2 687	2 861	3 981	4 698	14 227	8,98%	10,86%
Hargy Oil Palms	15 809	16 444	14 699	19 480	66 432	16 949	20 120	8 791	13 969	59 829	39,45%	11,04%
Total own	63 142	67 752	72 011	68 567	271 472	62 210	65 868	70 976	65 587	264 641	4,54%	2,58%
Outgrowers												
Tolan Tiga Group	49	109	179	212	549	0	0	92	58	150	265,52%	265,58%
Umbul Mas Wisesa Group	36	40	35	21	132	32	29	56	34	151	-38,24%	-12,58%
Agro Muko Group	927	1 013	831	900	3 671	730	766	1 067	978	3 541	-7,98%	3,68%
South Sumatra Group	348	341	480	600	1 769	105	284	248	386	1 023	55,44%	72,92%
Hargy Oil Palms	14 032	14 579	11 123	11 957	51 691	10 615	13 057	8 370	10 966	43 008	9,04%	20,19%
Total outgrowers	15 391	16 083	12 648	13 690	57 812	11 482	14 136	9 833	12 422	47 873	10,21%	20,76%
Total Palm Oil	78 533	83 835	84 659	82 257	329 284	73 692	80 004	80 809	78 009	312 514	5,45%	5,37%

Palm Kernels	Q1	Q2	Q3	Q4	YTD
Own					
Tolan Tiga Group	3 795	3 697	4 918	3 845	16 255
Umbul Mas Wisesa Group	1 373	1 596	2 309	1 476	6 754
Agro Muko Group	3 817	4 741	4 481	3 997	17 036
South Sumatra Group	651	544	720	907	2 822
Total own	9 636	10 578	12 428	10 225	42 867
Outgrowers					
Tolan Tiga Group	10	23	37	43	113
Umbul Mas Wisesa Group	6	7	6	3	22
Agro Muko Group	171	218	153	178	720
South Sumatra Group	59	63	82	102	306
Total outgrowers	246	311	278	326	1 161
Total Palm Kernels	9 881	10 890	12 706	10 551	44 028

Palm Kernel Oil	Q1	Q2	Q3	Q4	YTD
Hargy Oil Palms Own	1 302	1 387	1 103	1 502	5 294
Hargy Oil Palms Outgrowers	1 158	1 129	880	935	4 102
Total Palm Kernel Oil	2 460	2 516	1 983	2 438	9 397

Rubber	Q1	Q2	Q3	Q4	YTD
Own					
Tolan Tiga Group	173	97	337	311	918
Melania	746	837	508	604	2 695
Agro Muko	498	436	325	427	1 686
Total own	1 417	1 370	1 170	1 343	5 300
Outgrowers					
Tolan Tiga Group	204	55	192	260	711
Total Rubber	1 621	1 425	1 362	1 603	6 011

Tea	Q1	Q2	Q3	Q4	YTD
Melania - Own	810	668	500	686	2 664
Melania - Outgrowers	0	0	19	79	98
Total Tea	810	668	519	765	2 762

Bananas	Q1	Q2	Q3	Q4	YTD
Azaguie 1	1 751	919	1 278	1 204	5 152
Azaguie 2	2 216	2 111	2 126	1 994	8 447
Agboville	2 785	1 767	1 956	2 480	8 988
Motobe	2 266	2 354	2 276	1 675	8 571
Total Bananas	9 019	7 150	7 636	7 353	31 158

Q1	Q2	Q3	Q4	YTD	Q4	YTD
3 855	3 576	5 289	4 344	17 064	-11,49%	-4,74%
1 444	1 305	1 775	1 500	6 024	-1,60%	12,12%
3 561	3 602	5 002	4 225	16 390	-5,40%	3,94%
543	563	804	900	2 810	0,78%	0,43%
9 403	9 046	12 870	10 969	42 288	-6,78%	1,37%
0	0	19	12	31	258,33%	264,52%
4	5	8	6	23	-43,33%	-2,61%
145	149	211	183	688	-2,73%	4,65%
21	55	48	72	196	41,67%	56,12%
170	209	286	273	938	19,56%	23,82%
9 573	9 255	13 156	11 242	43 226	-6,14%	1,86%

Q1	Q2	Q3	Q4	YTD	Q4	YTD
1 526	1 570	858	1 110	5 064	35,35%	4,55%
986	1 219	613	783	3 601	19,43%	13,92%
2 512	2 789	1 471	1 893	8 665	28,77%	8,44%

Q1	Q2	Q3	Q4	YTD	Q4	YTD
259	125	275	313	972	-0,51%	-5,51%
963	654	377	385	2 379	56,88%	13,28%
600	467	581	496	2 144	-13,83%	-21,34%
1 822	1 246	1 233	1 194	5 495	12,46%	-3,55%
227	69	239	296	831	-12,16%	-14,44%
2 049	1 315	1 472	1 490	6 326	7,57%	-4,98%

Q1	Q2	Q3	Q4	YTD	Q4	YTD
738	574	448	571	2 331	20,14%	14,29%
0	0	0	0	0	-	-
738	574	448	571	2 331	33,98%	18,49%

Q1	Q2	Q3	Q4	YTD	Q4	YTD
1 440	1 065	1 155	1 316	4 976	-8,51%	3,54%
2 497	1 814	3 101	2 516	9 928	-20,75%	-14,92%
2 349	2 455	1 477	2 555	8 836	-2,94%	1,72%
2 466	2 642	1 825	2 176	9 109	-23,02%	-5,91%
8 752	7 976	7 558	8 563	32 849	-14,13%	-5,15%

Commodity Price Data December 2020

Average market prices

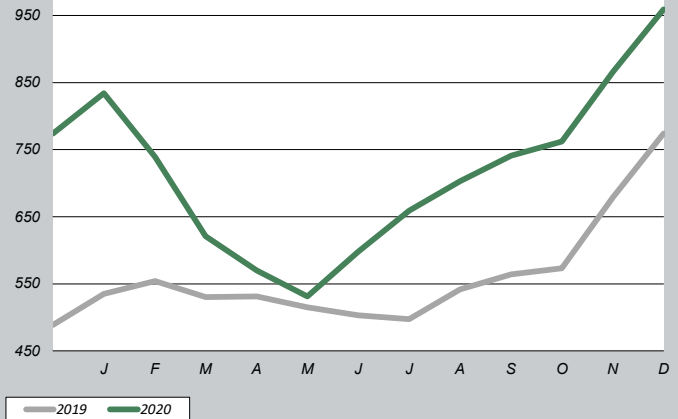
Product		YTD Q4/2020	YTD Q4/2019
CPO (CIF Rotterdam)*	in \$/mt	715	566
CPKO (CIF Rotterdam)*	in \$/mt	826	668
RSS3 (FOB Singapore)**	in \$/mt	1 728	1 640
Tea (avg auct Mombasa)**	in \$/mt	2 004	2 226
Bananas (CFR Europe)***	in €/mt	628	662

* Oil World price data

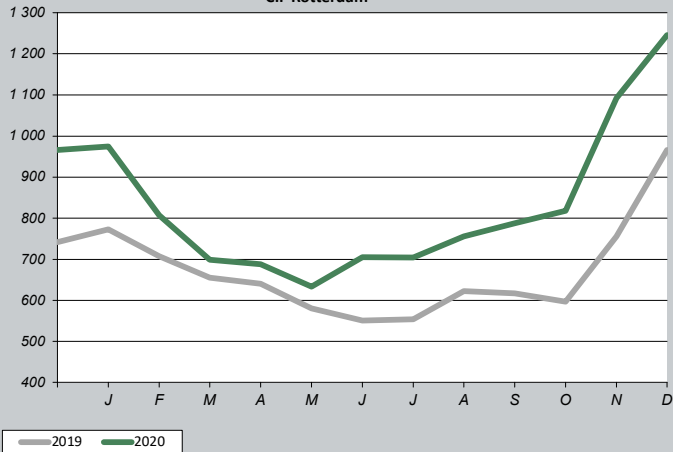
** World bank commodity price data - updated database

*** CIRAD price data (in EUR)

**Crude Palm Oil in \$/mt
CIF Rotterdam**



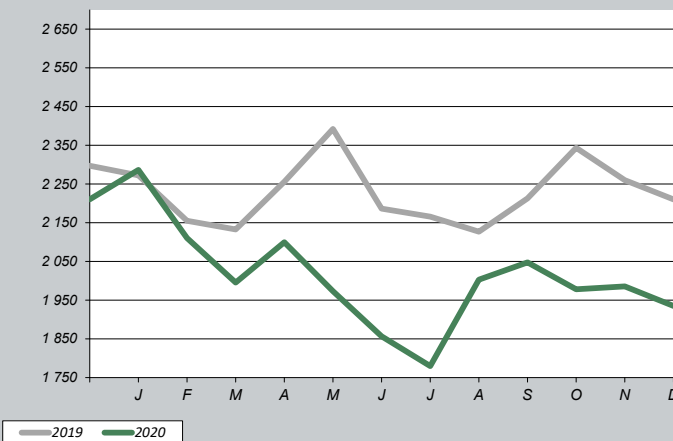
**Crude Palm Kernel Oil in \$/mt
CIF Rotterdam**



**RSS3 in \$/mt
FOB Singapore**



**Tea in \$/mt
average auction Mombasa**



Bananas CFR Europe in €/mt

